

Artwork Guidelines

CD Team has an in-house graphics department at your disposal. Working with Apple Macintosh computers, our experienced team of designers are available to answer any artwork questions you may have and offer advice how to achieve the best print results. Call them today on **01491 63 63 73**.

The following specifications set out our artwork recommendations:

Although there is a vast array of design and desktop publishing software available today, not all are suitable for creating artwork for professional print production. CD Team only support artwork supplied in the following formats. Artwork supplied in formats other than those listed below may not be suitable and an alternative suggested, or we can re-create your artwork for you for a small charge.

We can accept artwork by:

- Disc (CD or DVD)
- Email as .zip files up to 10MB
- Uploading to our FTP site (call for details)
- Collection from your FTP site

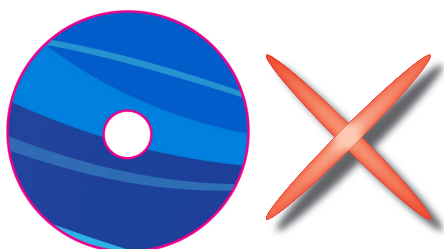
Please supply your artwork files as:

- Illustrator eps (up to CS3 v13)
- Photoshop .psd or .tif (up to CS3 v10)
- InDesign .indd (up to CS3 v5)
- Acrobat .pdf (up to CS3 v8)

N.B. Unfortunately we do not support Quark Xpress. We can accept Quark Xpress files up to version 6.5 as an EPS file, simply save your file using the "Save Page as EPS" function from the "File" menu.

Here are some general guidelines to follow when creating and supplying your artwork:

- Please provide your artwork images at a minimum of 300dpi resolution.
- Please ensure all images are linked and fonts embedded. Alternatively, please convert any fonts to outlines before sending.
- If possible, please supply layered working files or vector graphics rather than flattened images.
- The majority of print jobs will be printed CMYK, therefore it is important that your file is set up in CMYK unless you have requested a pantone match print. Any linked or embedded picture images (.jpls etc) should be supplied as CMYK files rather than RGB.
- Please allow an extra 3mm of bleed on all edges of your artwork
- Where possible please remove any outlines, guides or circles to represent the disc hub, Simply supplying your final disc artwork as a 120 x 120mm square is fine.



We recommend using the following as a minimum size guide:

- Type should be at least a 5 point size in positive print and a minimum of 6 when reversed.

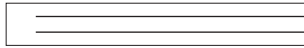
ABCDEFGHIJKLMNOPQRSTUVWXYZ

ABCDEFGHIJKLMNOPQRSTUVWXYZ

Positive 5 pts

Reverse 6pts

- Stroke weight, or line width should be a minimum of 0.5 point size, both in positive print and when reversed.



Positive 0.5 pts

Reverse 0.5 pts

- Please supply all fonts with your artwork files or use the Type>convert to outlines option.
- If emailing your artwork please save all fonts within a separate folder and supply as a .zip file. This will minimise the chances of font corruption during transfer.
- Try to avoid using 'light' serif fonts as these do not print particularly well when reversed out of dark solid areas.

Printing 4 colour process or CMYK (Cyan Magenta Yellow and Black):

- Try to keep any light areas of colour above a 15% tint of either C, M, Y or K
- When creating large areas of black for CMYK print we recommend you use a "Rich Black" (C=50% M=50% Y=50% K=100%). For smaller areas, e.g. text only. 100% black (K) is fine.

Printing paper parts




- Please add a minimum of 3mm bleed on all trim edges to allow for cropping.
- Please try to keep text and images at least 2mm away from folds or trim edges.

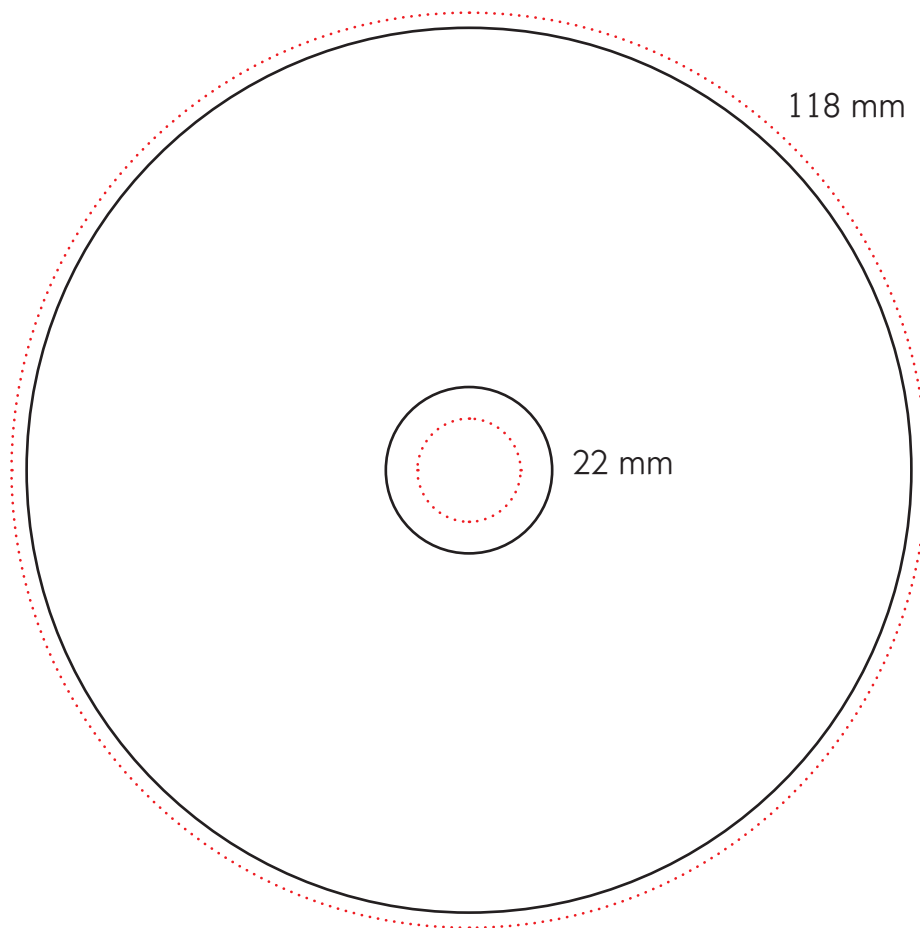
Please note that due to the different print surfaces used, your disc print and paper parts print may differ ever so slightly. If it is critical that they match exactly, please mention this to your account manager.

Notes

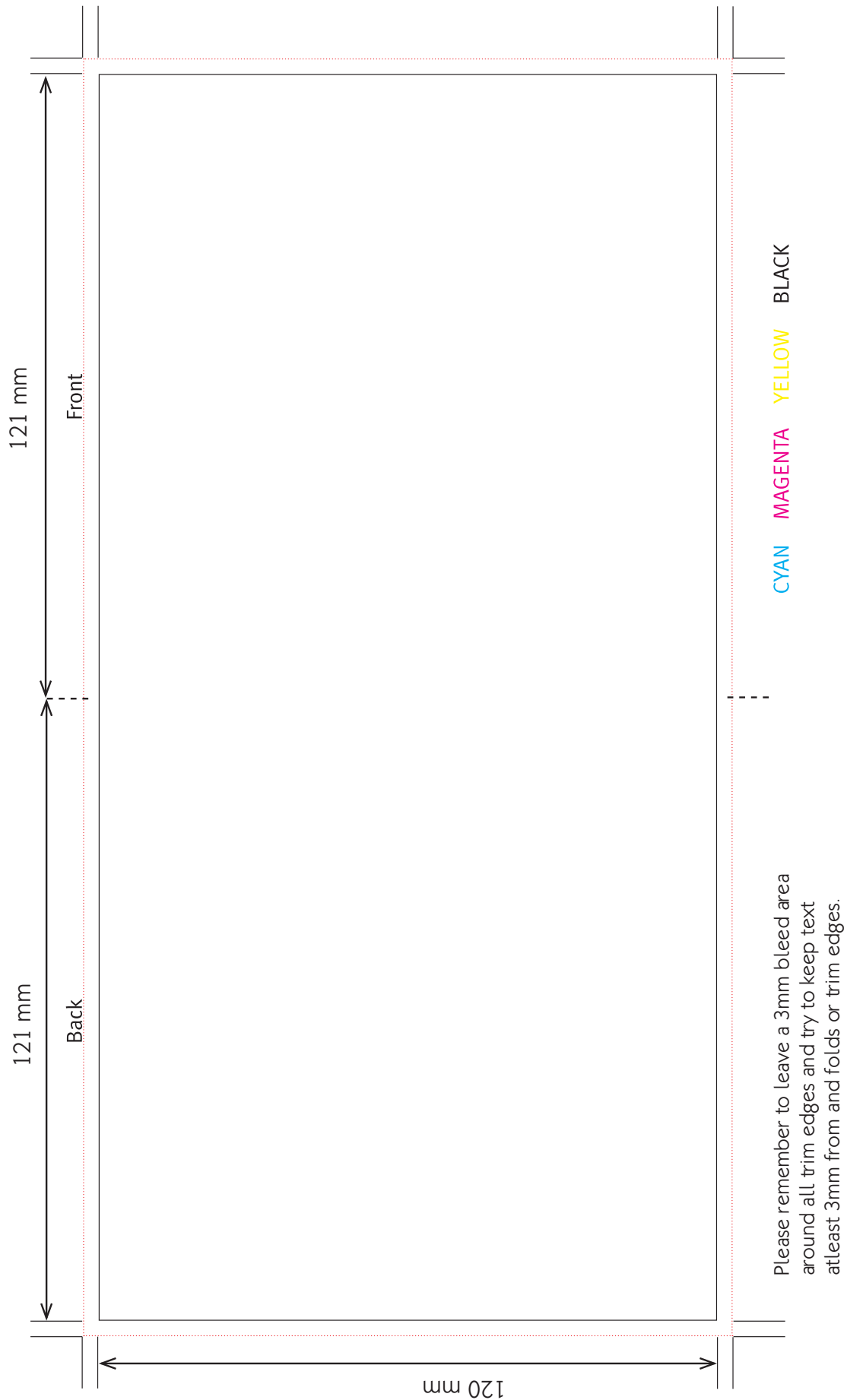
- These templates are intended as a guideline only. Specifications can vary by very small amounts according to the type of print process and media used.
- The following templates are not to scale, some have been adjusted to fit on these pages.

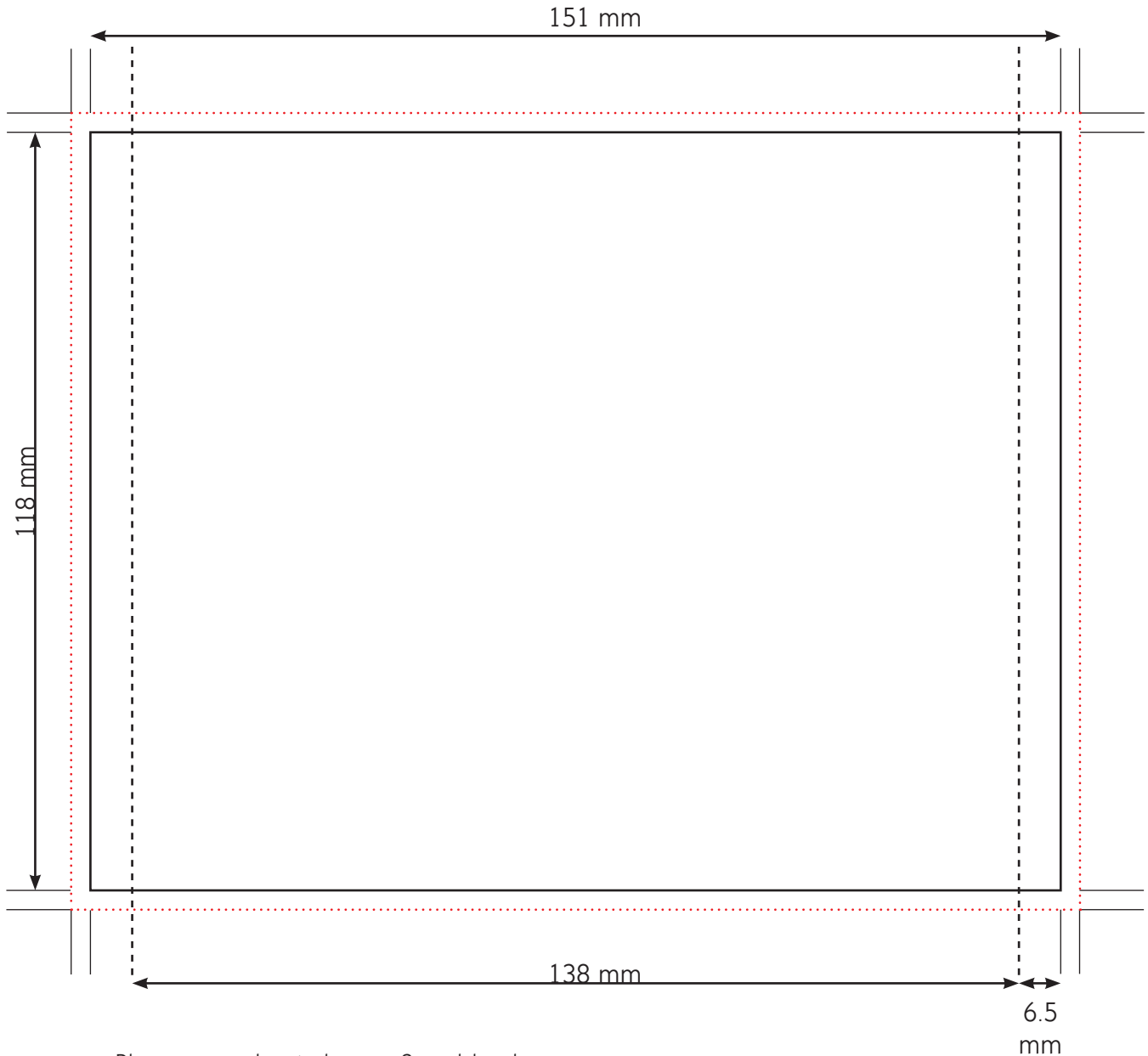
Key

Trim edges =  Bleed area =  Fold = 



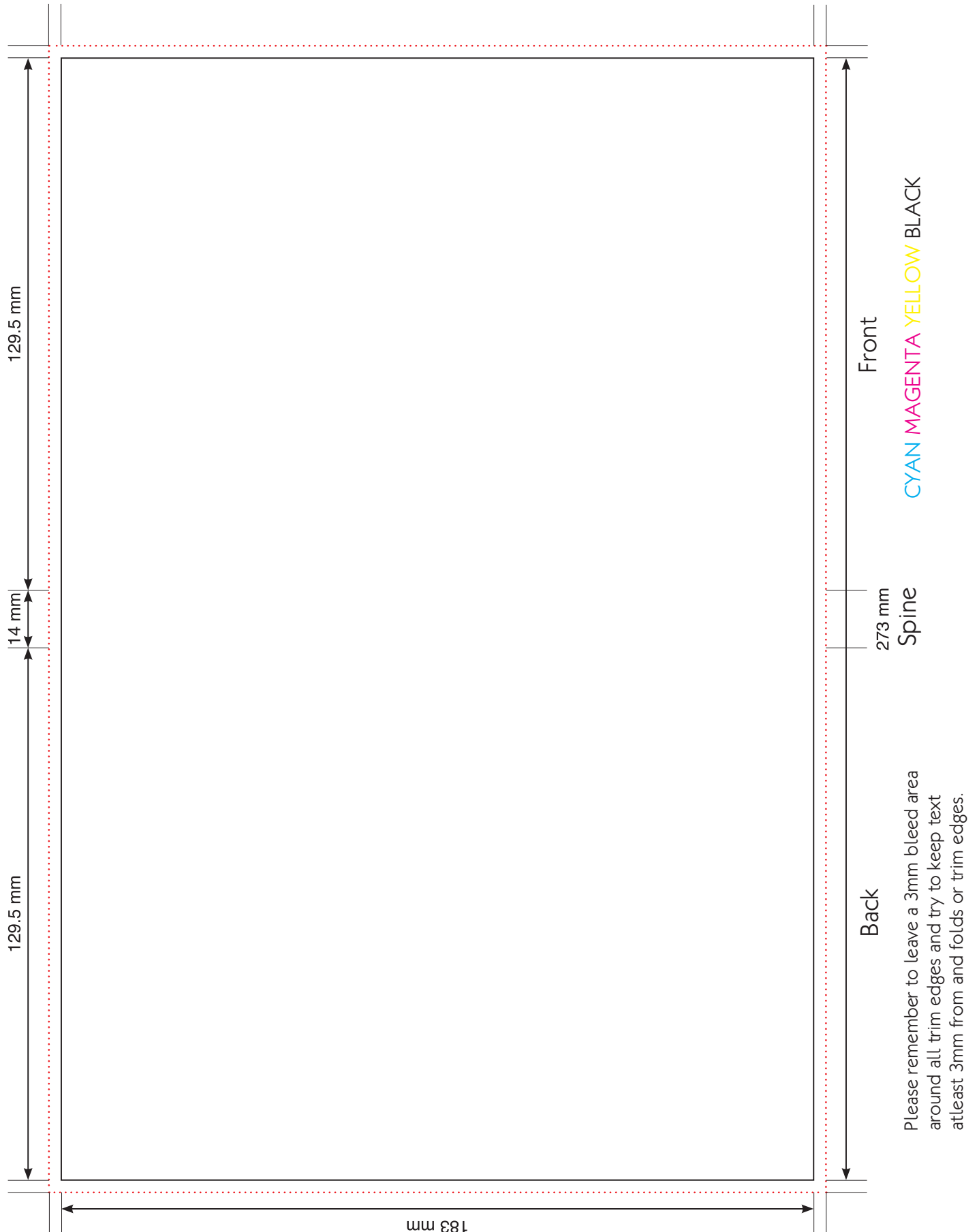
Please remember to leave a 3mm bleed around the disc circumference and hub edge wherever possible. Try to keep text at least 3mm from the edge of the disc



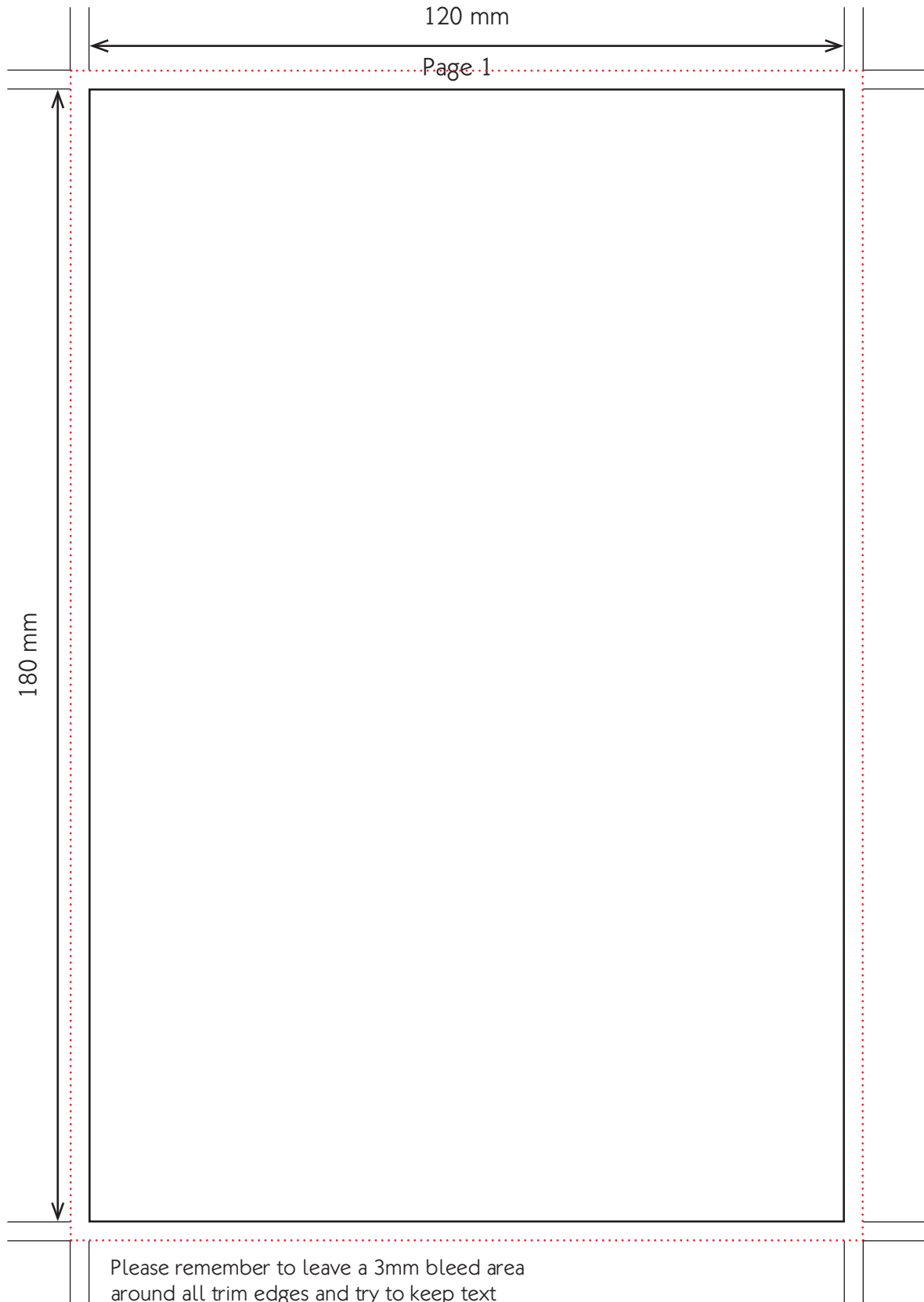


Please remember to leave a 3mm bleed area around all trim edges and try to keep text at least 3mm from and folds or trim edges.

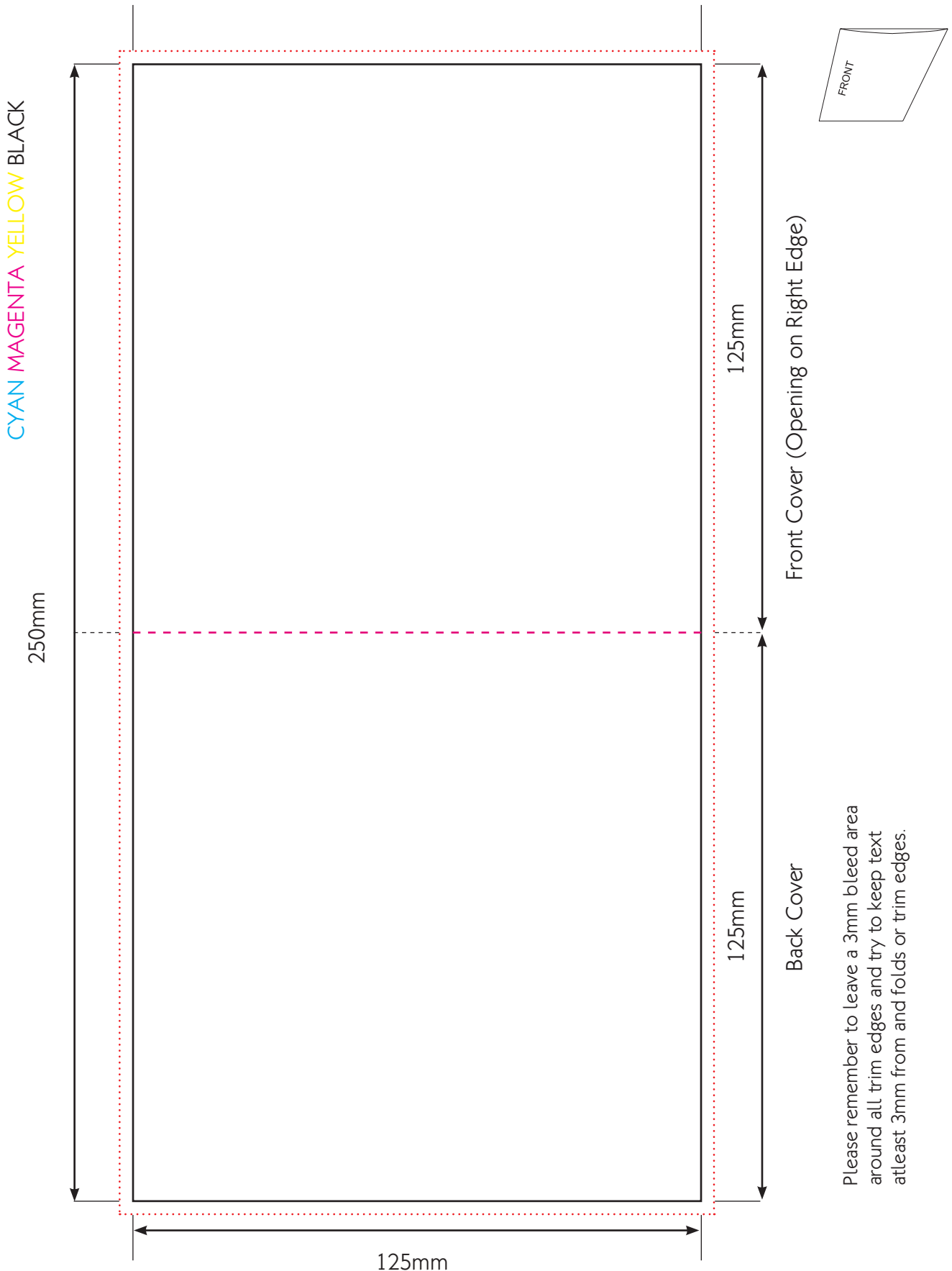
CYAN MAGENTA YELLOW BLACK



CYAN MAGENTA YELLOW BLACK



Please remember to leave a 3mm bleed area around all trim edges and try to keep text at least 3mm from and folds or trim edges.



Please remember to leave a 3mm bleed area around all trim edges and try to keep text at least 3mm from and folds or trim edges.

20 Page

20	1	12	9
2	19	10	11
18	3		
4	17		
16	5		
6	15		
14	7		
8	13		

16 Page

16	1		
2	15		
14	3		
4	13		
12	5		
6	11		
10	7		
8	9		

12 Page

12	1		
2	11		
10	3		
4	9		
8	5		
6	7		

4 Page

4	1	
2	3	

8 Page

8	1	
2	7	
6	3	
4	5	